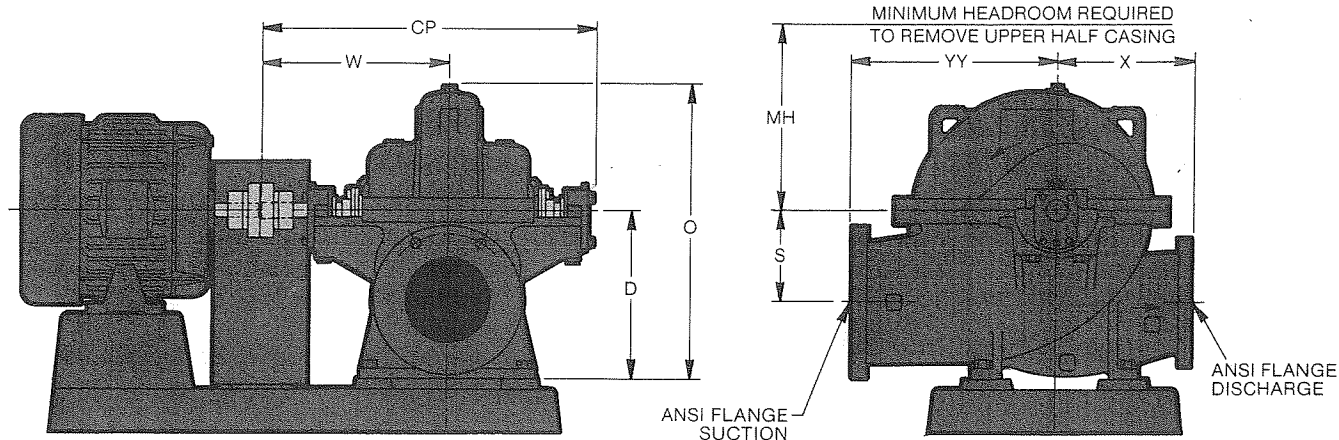


Dimensions Model 3410

All dimensions in inches and (mm). Not to be used for construction.



Group	Disch.	Suct.	Casing	CP	W	YY	X	S	D	O	MH	Wt. Lbs. (kg)
S	2	3	11	26.38 (670)	14.62 (371)	9.00 (229)	7.50 (190)	7.25 (184)	11.50 (292)	18.38 (467)	12.38 (314)	330 (150)
	3	4	10	26.38 (670)	14.62 (371)	10.50 (267)	9.00 (229)	7.00 (178)	11.50 (292)	18.91 (480)	12.75 (324)	333 (151)
	4	6	9	26.38 (670)	14.62 (371)	10.00 (254)	8.50 (216)	6.00 (152)	11.50 (292)	17.88 (454)	10.88 (276)	334 (152)
	4	6	11/H	26.38 (670)	14.62 (371)	12.38 (314)	10.50 (267)	6.00 (152)	11.50 (292)	19.22 (488)	13.25 (336)	410 (186)
	4	6	13/H	26.38 (670)	14.62 (371)	13.25 (336)	11.00 (279)	6.00 (152)	11.50 (292)	20.59 (523)	15.88 (403)	472 (215)
M	4	6	15	31.88 (810)	18.00 (457)	14.50 (368)	10.00 (254)	9.50 (241)	16.00 (406)	25.88 (657)	17.38 (441)	637 (290)
	6	8	11	31.88 (810)	18.00 (457)	14.50 (368)	12.00 (305)	9.00 (229)	16.00 (406)	26.44 (672)	16.00 (406)	692 (315)
	6	8	14/H	31.88 (810)	18.00 (457)	15.50 (394)	13.00 (330)	9.00 (229)	16.00 (406)	25.75 (654)	16.75 (425)	665 (302)
	6	8	17	31.88 (810)	18.00 (457)	15.75 (400)	14.25 (362)	9.00 (229)	16.00 (406)	27.88 (708)	20.62 (524)	885 (402)
	8	10	11	31.88 (810)	18.00 (457)	17.00 (432)	13.25 (336)	9.00 (229)	16.00 (406)	25.50 (648)	15.25 (391)	737 (335)
	8	10	12	31.88 (810)	18.00 (457)	19.50 (495)	13.00 (330)	8.75 (222)	16.00 (406)	27.31 (694)	17.38 (441)	858 (389)
	8	10	14	31.88 (810)	18.00 (457)	19.50 (495)	13.88 (352)	8.75 (222)	16.00 (406)	28.50 (724)	19.50 (495)	996 (453)
L	6	8	22	37.28 (946)	21.00 (533)	22.00 (559)	20.50 (520)	13.50 (343)	22.00 (559)	40.50 (1029)	22.50 (572)	1495 (680)
	8	10	17/H	37.28 (946)	21.00 (533)	20.00 (508)	16.50 (419)	10.00 (254)	22.00 (559)	34.06 (865)	20.88 (530)	1286 (585)
	6	10	17	37.28 (946)	21.00 (533)	20.00 (508)	16.50 (419)	11.00 (279)	22.00 (559)	33.88 (860)	20.62 (524)	1015 (461)
	8	10	21	37.28 (946)	21.00 (533)	20.30 (521)	17.00 (432)	13.00 (330)	22.00 (559)	36.31 (922)	24.88 (632)	1520 (691)
	10	12	12	37.28 (946)	21.00 (533)	21.00 (533)	14.00 (356)	11.00 (279)	22.00 (559)	34.88 (886)	19.12 (486)	1229 (559)
	10	12	14	37.28 (946)	21.00 (533)	21.00 (533)	16.75 (425)	11.00 (279)	22.00 (559)	34.00 (864)	19.25 (489)	1410 (641)
	10	12	17	37.28 (946)	21.00 (533)	22.50 (572)	17.62 (448)	11.50 (292)	22.00 (559)	37.50 (952)	30.75 (781)	1709 (777)
XL	10	12	12H	40.83 (1037)	23.19 (589)	22.00 (559)	15.00 (381)	13.00 (330)	24.00 (610)	39.50 (1003)	21.75 (552)	2168 (985)
	10	12	15	40.83 (1037)	23.19 (589)	24.00 (610)	16.00 (406)	13.00 (330)	24.00 (610)	38.00 (965)	21.50 (533)	1720 (782)
	12	14	15	40.83 (1037)	23.19 (589)	25.00 (635)	18.00 (457)	13.00 (330)	24.00 (610)	36.50 (927)	21.75 (552)	2500 (1136)

Sizes 2x3-11, 4x6-11, 3x4-10, 8x10-21 & 6x8-22 are furnished with 250 lb. discharge flange.

Pumps furnished with right hand rotation are standard. Left hand rotation optional.



GOULDS PUMPS

OUTLINE DRAWING



ITT

DR. BY
CLI
DATE
01-11-2008

CR. BY
CLI
DRAWING

A1-260489

REV.

SHEET 1 OF 1

REV.

GOULDS SERIAL NO.: B260C489
CUSTOMER: FRONTIER EL DORADO
CUSTOMER P.O. NO.: 0036959
ITEM NO.: 001
LEE MATHEWS EQUIP. INC. P.O. NO.: 1059893

- NOTES:
- DRAWING IS NOT TO SCALE.
 - ALL DIMENSIONS ARE IN INCHES.
 - WEIGHTS ARE APPROXIMATE.
 - INSTALL FOUNDATION BOLTS IN PIPE SLEEVES. ALLOW .75" TO 1.50" FOR GROUTING.
 - COUPLING & COUPLING GUARD SUPPLIED BY CUSTOMER.
 - PUMP SHAFT DIA. IS 1.375" W/ KEYWAY OF .31"X.19".

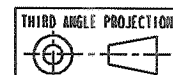
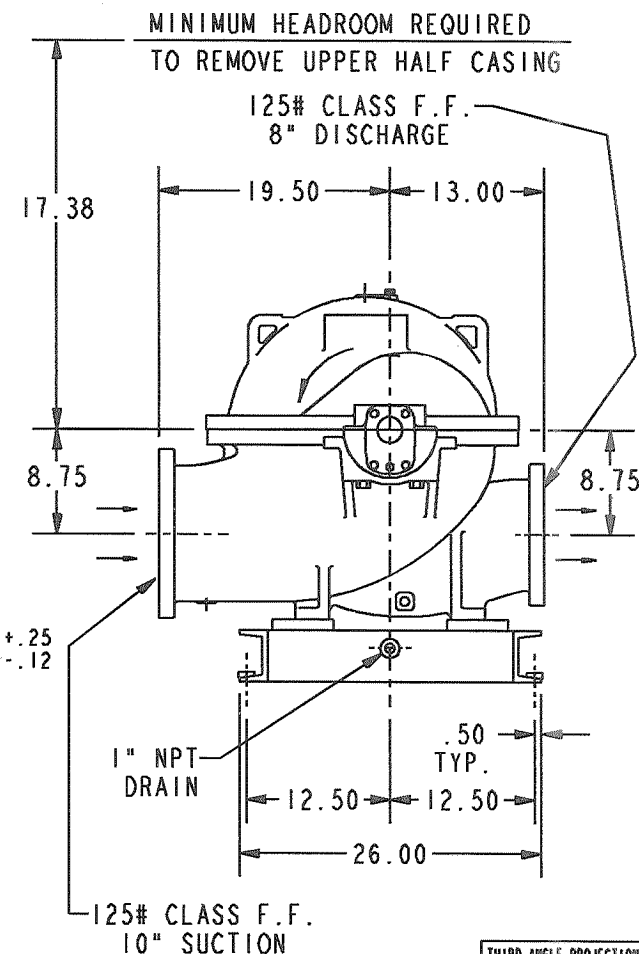
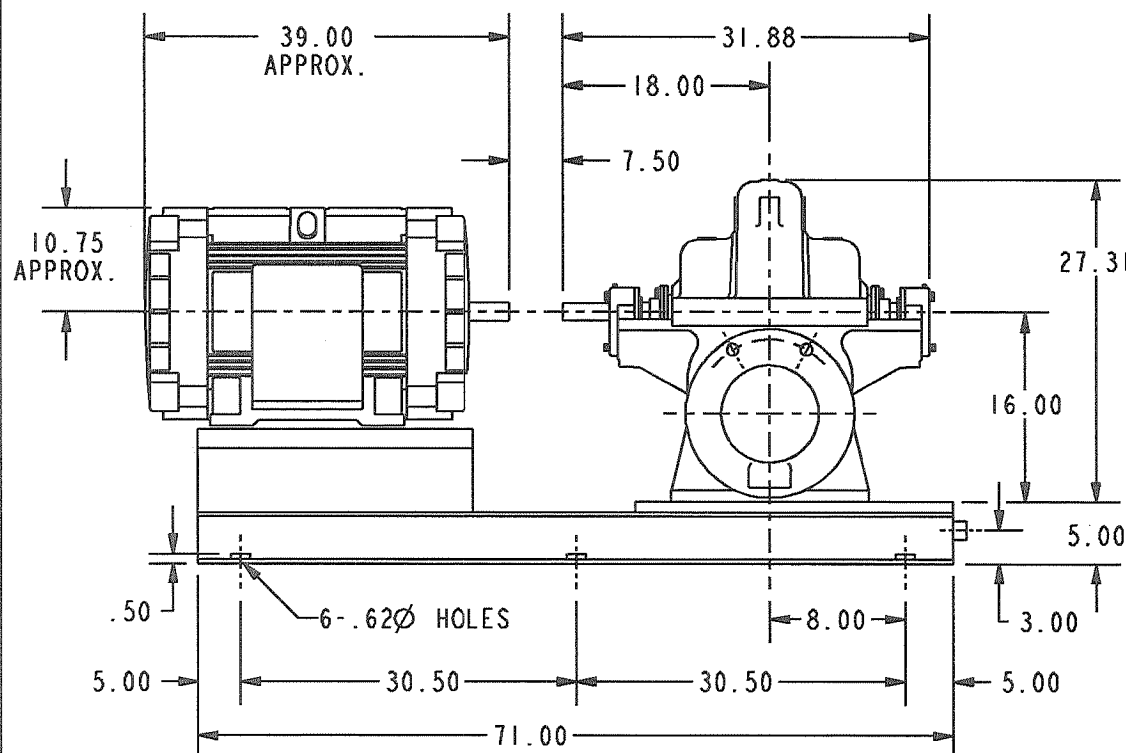
WEIGHTS (LBS)	
PUMP	858
MOTOR	1160
BASEPLATE	572
TOTAL	2590

ORDER NO.: B260C489
MODEL: 3410 M SIZE: 8X10-12
ROTATION: RIGHT HAND

FAB STEEL DRIP LIP BASEPLATE

FLANGE DRILLING CONFORM TO ANSI.
BOLT HOLES STRADDLE CENTERLINE.

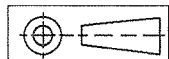
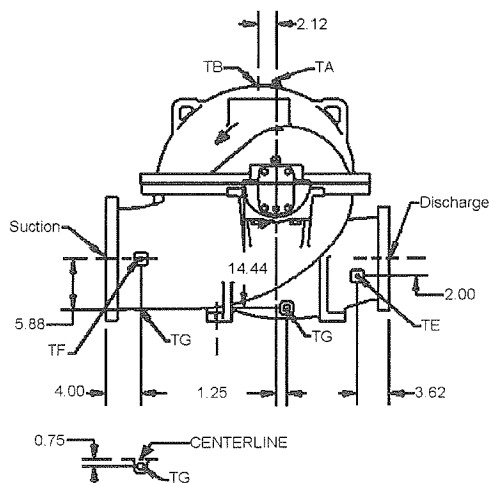
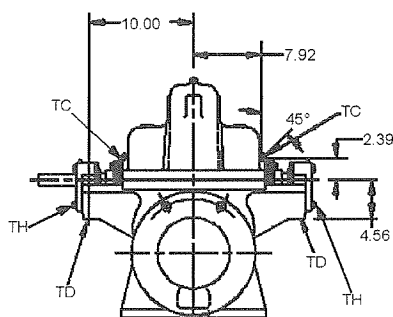
MOTOR: NEMA
FRAME: 404T



PRO/E 2D DWG

TAPPED OPENINGS MODEL 3410 M 8x10-12

				FURNISHED					FURNISHED
NO.	SIZE	QTY.	PURPOSE	YES/NO	NO.	SIZE	QTY.	PURPOSE	YES/NO
TA	3/8	1	CASING VENT	YES	TH	1/4	2	OIL DRAIN	YES
TB	3/4	1	CASING PRIME CONN	YES	TJ	1/4	4	BEARING COOLING CONN	NO
TC	3/8	2	STUFF. BOX SEAL RING CONN	YES	TK	3/8	2	GLAND FLUSH CONN	NO
TD	3/4	2	STUFF.BOX OVERFLOW CONN	YES	TL	1/4	2	GLAND VENT CONN	NO
TE	3/8	1	DISCH. GAUGE CONNECTION	YES	TM	3/8	2	GLAND DRAIN CONN	NO
TF	3/8	1	SUCTION GAUGE CONNECTION	YES	TN	1/4	4	GLAND QUENCH CONN	NO
TG	3/4	2	CASING DRAIN CONN	YES					



All dimensions are in inches.

Drawing is not to scale

DIMENSIONS ARE CERTIFIED FOR CONSTRUCTION BY:

Andrew Young

DATE January 30, 2008

Customer: FRONTIER EL DORADO

Goulds Serial No: B260C489

Customer P.O. No: 0036959

Item No: 001

LEE MATHEWS EQUIP. INC. PO# 1059893

Copyright 2008
ITT Corp

DRAWING NO A260489T

Rev. 0

Date: January 30, 2008

SUPERSEDES ANY PREVIOUS DRAWINGS



CENTRIFUGAL PUMP CHARACTERISTICS

CDS 3847-2

RPM 1780

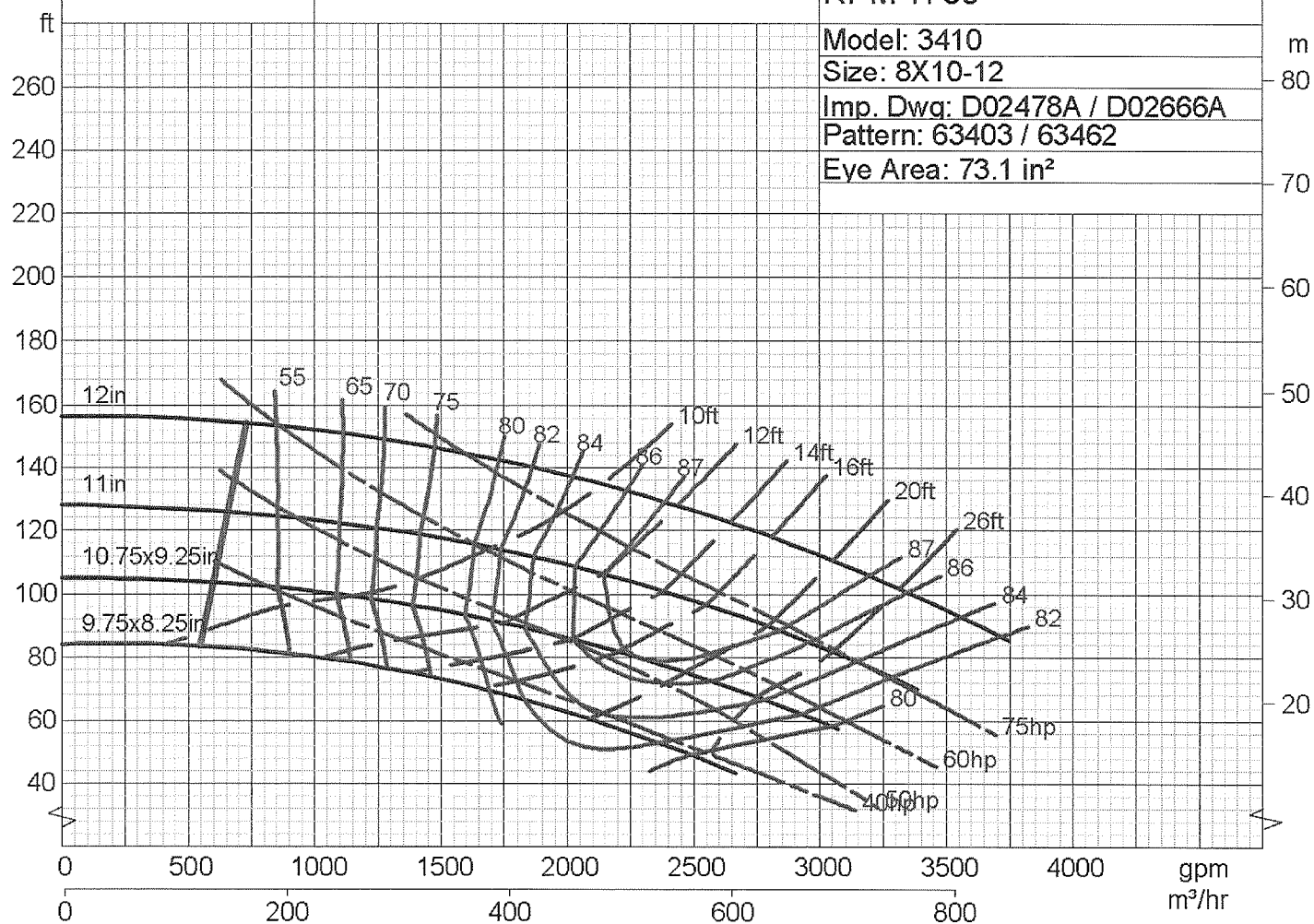
Model: 3410

Size: 8X10-12

Imp. Dwg: D02478A / D02666A

Pattern: 63403 / 63462

Eye Area: 73.1 in²



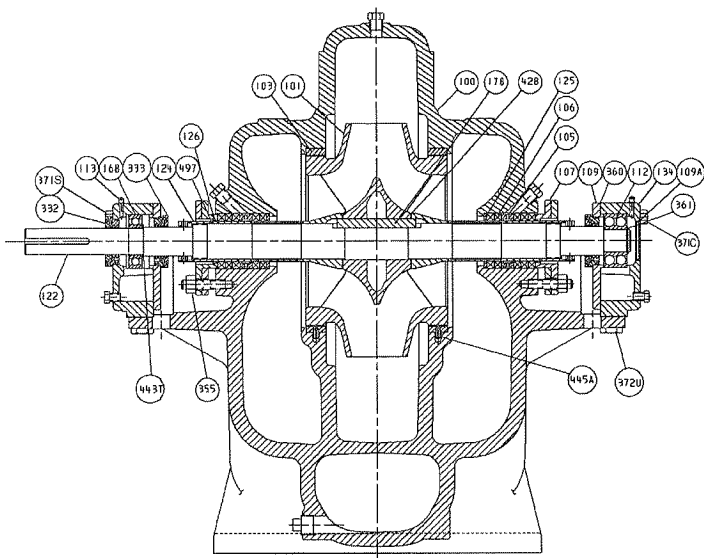
Customer Specified
Imp. Diam.: 12.00x12.00 in
Certified By: Andrew Young

- Some impeller diameters of this selection will require a taper cut trim. They are indicated in the performance curve above as MAJOR DIAMETER x MINOR DIAMETER. The MAJOR DIAMETER is on the suction side of the impeller.

Customer: FRONTIER EL DORADO
Goulds Serial No: B260C489
Customer P.O. No: 0036959
Item No: 001
LEE MATHEWS EQUIP. INC. PO# 1059893



GREASE LUBRICATION



* Recommended spare parts
Items not illustrated

BILL OF MATERIAL

ITEM	QTY	PART NAME	MATERIAL	ASTM#
100	1	CASING	CAST IRON	A48
101	1 *	IMPELLER	SILICON BRZ ASTM B584 MODIFI	
103	2 *	RING WEAR (CASING)	FEDERALLOY III BRZ ASTM B584	B584
109	2	COVER, END	CAST IRON	A48
109A	1	COVER, END THRUST	CI 45	
112	1 *	BEARING, BALL		
113	2	FITTING, GRS		
122	1 *	SHAFT	ALLOY STL 4140 4140	A434
124	2 *	NUT, SHAFT, SLV	FEDERALLOY III BRZ ASTM B584	B584
126	2 *	SLEEVE, SHAFT	FEDERALLOY III BRZ ASTM B584	B584
134	2	HOUSING	CAST IRON	A48
168	1 *	BEARING, BALL	CI 45	
178	1	KEY, IMPLR		
222B	4 #	SET SCREW	303SS	A582-91
332	1 *	GREASE/LAB SEALS OB	316SS	A276-91A
333	2 *	GREASE/LAB SEAL IB		
351D	1 *	GASKET, CASE (DISCH)	NON-ASBESTOS	
351S	1 *	GASKET, CASE, SUCT	NON-ASBESTOS	
360	2 *	GASKET, END COVER	VELLUMOID P3313B	D-1170
361	1 *	RING, RTNG		
371C	8	SCREW, HHC	CARBON STEEL GR B	A307
372U	4	SCREW, HHC	CARBON STEEL GR B	A307
400	1 *	KEY, CPLG	CARBON STEEL 1018/1020	A108
408B	4 #	PLUG, PIPE	CARBON STEEL GR B	A307
408C	2 #	PLUG, PIPE	CARBON STEEL GR B	A307
428	2 *	GASKET, SLV	NON-ASB GLK 3000	
445A	4	PIN, ROLL		
497	2 *	O-RING SLV	BUNA-N	
497F	1 *	O-RING OUTBOARD ROTARY	VITON	
497G	1 *	O-RING OUTBOARD STA	VITON	
497H	2 *	O-RING INBOARD RTRY	VITON	
497J	2 *	O-RING INBOARD STA	VITON	

Customer: FRONTIER EL DORADO
Goulds Serial No: B260C489
Customer P.O. No: 0036959
Item No: 001
LEE MATHEWS EQUIP. INC. PO# 1059893

Copyright 2006
ITT Corp

DRAWING NO A260489C **Rev. 0** Date: January 30, 2008

SUPERSEDES ANY PREVIOUS DRAWINGS